

ADAPTING THROUGH A TRANSITION

2020 ANNUAL REPORT








ANNUAL REPORT 2020

Contents

- 04 | A Message from the Executive Director
- 05 | Overview of MDPI
- 06 | Highlights
- 08 | Where We Work
- 10 | Marine Stewardship Council
- 12 | Fisheries Improvement
- 18 | MDPI Reach & Achievements
- 20 | Fisheries Community Organization
- 24 | Adapting Through the Pandemic
- 26 | Fair Trade USA Implementation
- 28 | INVEST Project
- 30 | Fishery Ecosystem Driving Force
- 32 | PT Sahabat Laut Lestari
- 34 | Meet the Team
- 36 | Operations & Finance Report

MDPI 2020 Annual Report
© 2020 MDPI. All rights reserved.

Yayasan Masyarakat dan Perikanan Indonesia (MDPI)
Ruko Istana Regency Blok S No.7
Jl. Bypass Ngurah Rai, Pesanggaran
Denpasar 80223, Bali, Indonesia
Phone: (+62 361) 471 9020
Email: info@mdpi.or.id
www.mdpi.or.id

 Masyarakat Dan Perikanan Indonesia
 @mdpi_foundation
 @MDPIIndonesia
 Yayasan Masyarakat dan Perikanan Indonesia
 Yayasan Masyarakat dan Perikanan Indonesia



In the midst of uncertainties in the world at the moment, we were able to achieve many positive outcomes, further assuring us that the approaches applied by MDPI are highly valuable in creating long term behavioral change. ”

Yasmine Simbolon
MDPI Executive Director

FOREWORD

As with the rest of the world, 2020 has changed our habit to the new normal, with all adaptations we need to do after the Coronavirus Disease-19 (COVID-19) pandemic outbreak. Travels are limited, work from home is enacted, virtual interaction through video application should be made into regular way of work; for MDPI who works and interacts directly with the whole elements of fishing communities, from fishermen, companies and government, all activities during the pandemic are run with full adaptation and improvisation. In spite of that, we are still grateful that we can still put on effort and resources to continue implementing our programs, and ensure the health of our staff and community in MDPI work area.

In the midst of uncertainties in the world at the moment, many positive things successfully attained and that makes us even more certain that the approach MDPI applies – work and stay among the local community – is highly valuable in creating long term behavioral change. MDPI keeps on assisting Fair Trade fishermen group including running emergency response program using Premium Fund that was initially allocated for other programs. The application of MDPI new strategy for 2020-2025 keeps on running; this year MDPI recruits two new senior staffs (Executive Director and Program Director) as an effort to strengthen operational capacity; new programs related to community organizing are started to run, by giving capacity building training for MDPI staffs as an

early stage, followed by assessment to identify Champion and new village to be assisted in 12 locations spread in 6 provinces. MDPI cooperation with industry partners and Fair Trade Fishermen Committee in Pulau Buru, Maluku managed to get the first Marine Stewardship Council (MSC) certification in the world for handline yellowfin tuna that officially accepted in May 2020. Although in the middle of pandemic time, we have collected 447 tons of port sampling data that we shared with The Ministry of Marine Affairs and Fisheries as an element in developing Harvest Strategy, managed to hold 6 Tuna Fishery Co-Management Committee (KPBP) meetings with strict health protocol application, co-facilitate the launch of Fishing Ship Vessel Permit One-stop Administration Services Office Service Program in East Lombok, West Nusa Tenggara Province, until forming 7 Fishermen Cooperation to accelerate fishermen independence. Some other big activities had to be done virtually, like Fair Trade Annual Audit and women empowerment training with fish sellers in 3 locations in North Sulawesi.

Our deepest gratitude to our partners, donors and other MDPI associates for your unending support. MDPI will keep on working on to actualize the real meaning of the word “community” as it is part of our name, by trying to encompass wider range of assistance areas, doing positive breakthrough, to keep on increasing small fishermen’s welfare in Indonesia.

- Jaz



VISI

Thriving fishing communities who are active participants and leaders in sustainable fisheries management.

MISI

To empower fishing communities to achieve sustainability by supporting community organization and harnessing market forces.



MDPI was founded in 2013 with the aim of driving responsible and sustainable fisheries activities for the well-being of fishing communities and fishery resources across Indonesia.

Our motto is “happy people, many fish”. Our organization started with a simple belief: that empowered, financially secure fisher communities are key in achieving fishery sustainability. We work with small-scale artisanal fisheries to foster sustainable, equitable, and traceable seafood supply chains. MDPI aims for real and robust long-term results in the communities we engage in.



HIGHLIGHTS

Marine Stewardship Council Certification

MDPI is proud for the Marine Stewardship Council (MSC) certification for yellowfin tuna handline in Buru Island, Province of Maluku for Anova Food, LLC and PT. Harta Samudra with Buru Fair Trade Fishermen Committee as joint certificate owner. The certificate received on 12 May 2020 was the first one in the world to be given to small fishermen. Further on page 10.

Establishment of Fisher Cooperatives

As one of our organizational strengthening efforts, MDPI included the establishment of fisher cooperatives as one of our program focus. In 2020, a handful of cooperatives were formed with MDPI's assistance, namely in Buru, Maluku; Bone, South Sulawesi; and Tolitoli, Central Sulawesi. We continue to work towards forming many more withing the next few years, as part of our new 5-year strategy. More on this on page 23.

Indonesian Small-Scale Fisheries Feature in FAO Journal

The Food and Agriculture Organization (FAO) of the United Nations (UN) have published a comprehensive journal on small scale sustainable fishery. This journal dedicates a special section for Fair Trade (FT) certification on yellow fin tuna handline fishery in Indonesia, a programme that has been implemented by MDPI since 2013. This FAO journal has detailed materials on FT implementation in fishery supply chain, including fishery business doers who work together with MDPI in fulfilling and keeping FT standards up to the present. Fair Trade: Certification of a yellowfin tuna handline fishery in Indonesia can be read on Part 6, page 105-121.

Public-Private Partnership Program

MDPI participated in meetings related to the Public-Private Partnership Program organized by the Directorate General of Strengthening Competitiveness of Maritime Products and Fisheries (PDSKP), and presented about the collaborative efforts between Government (Ministry of Marine Affairs and Fisheries and its departments)-Fishers-Suppliers-Processors with FT and MSC certifications, as an example of successful Partnership Program in Indonesia.



USAID SEA Fisher Champions

Under the mentorship of USAID SEA, Maluku and North Maluku got 4 new Champion fishermen after joining the training in Ambon, Province of Maluku on 27-30 January 2020. Some focus plan of these Sea Champions are encouraging recording of Fisher Log and Endangered/Threatened/Protected (ETP) Log, doing dissemination on protected animals, rumpon (fish aggregating device) making and routine beach cleaning.

Electronic Based Traceability System Workshop

MDPI got the chance to share some informations on several traceability workshops, one of which was at Fisheries High School (STP) Jakarta with Grade IV Cadets. On 13 February 2020, several MDPI representatives who were also STP Jakarta alumni shared their experience and related case studies related to technology-based traceability on fishery industry in Indonesia so the cadets can better understand traceability system before they go to their Practice place, also as part for their Final Practice Scientific Work (KIPA) preparation. Besides working with Directorate General of Strengthening Competitiveness, MDPI also organized workshop to discuss traceability development efforts on Indonesia fishery, using electronic system. This event in Bogor on 7-8 December 2020 also discussed about traceability principles and standards in international market and information about fishery data recording and storing technology.

"Small-Scale Fisheries Go International" Video Production

In collaboration with the Ministry of Maritime Affairs and Fisheries' Directorate General of Capture Fisheries, MDPI facilitated the production of a video about sustainable fishery processing in Indonesia, involving Fair Trade and MSC fishers in Buru Island, Maluku. Watch the video through this link: <http://bit.ly/SSFIndoBuru>



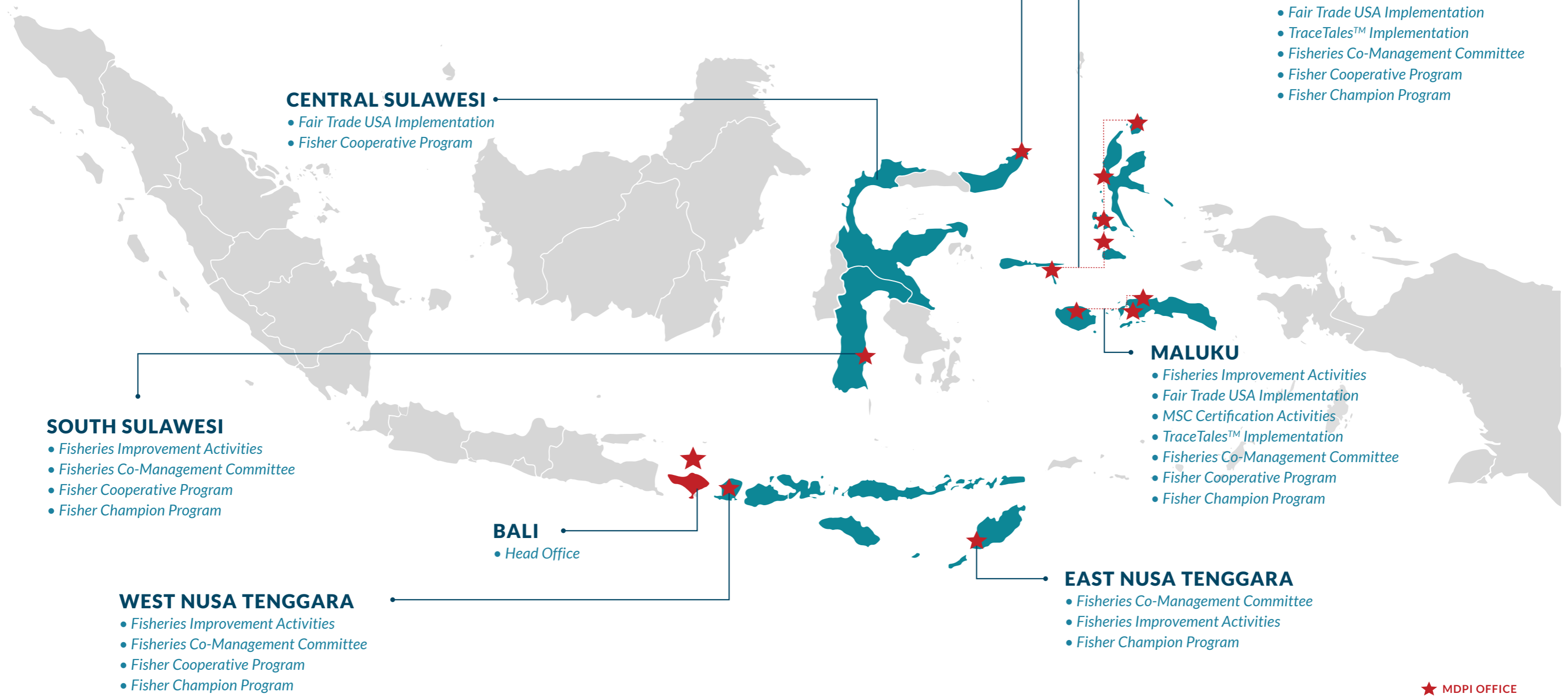
MDPI Staff Dinner

On the last day of our Fisheries Community Organizing training which was provided for all MDPI field staff, the Operations department hosted a dinner event on December 18th to wrap up the week-long series of activities in Bali. All MDPI staff are usually brought together at our Annual Gathering at the end of each year, but due to the ongoing pandemic, it was not possible this time around. Despite the strict health protocol that had to be put in place, this brief dinner still brought warmth and togetherness to the whole team.

MDPI ON THE MAP

WHERE WE WORK

MDPI has deep experience in fisheries management across Eastern Indonesia, with current implementation activities in six provinces. We work to secure real and robust long-term results in the communities we engage in through training and local champion empowerment.





ACHIEVING THE DREAM: MSC CERTIFICATION

The Marine Stewardship Council (MSC) certification for *handline yellowfin tuna* fishery in Indonesia has been MDPI's longtime dream, pursued ever since the organization was first established in 2013 through the Fisheries Improvement Project and Fair Trade USA Implementation.

The Fisheries Improvement Project (FIP) for small-scale tuna handline fishers in eastern Indonesia began with data collection in late 2012, as part of Anova Food's Fishing and Living program. We deeply believed that the communities we work alongside could eventually document and strengthen their compliance with MSC's 3 sustainability principles – 1) sustainable fish stocks, 2) minimizing environmental impact, and 3) effective fisheries management – therefore securing their access to international markets. In 2013, MDPI began actively implementing FIP with industry partners, Anova Food and PT Harta Samudra. Based on results of a 2009 MSC pre-assessment, MDPI implemented a step-wise approach to fishery improvements. MDPI began collecting catch data – responding to both the data standards and needs of national and regional government bodies as well as industry partners and the MSC. Simultaneously, we set out to strengthen fishery practices and support the collective organization of fishers into associations using the USA Fair Trade standard.

Leveraging the Fair Trade model, an international certification that is not solely focused on the sustainability of the resource, but also on improving livelihoods through community development funds, MDPI was able to assist fisher associations on Buru Island in achieving Fair Trade certification in 2014. With traceability requirements underpinning both Fair Trade and MSC standards, we were able to transfer progress made and lessons learned from our Fair Trade experience to the MSC standard. Continued implementation and development against our FIP coupled with the better practice, framework, and standards of Fair Trade contributed significantly to the results of MSC pre-assessment conducted in 2018.

At this time, MDPI also signed an MoU with the Ministry of Marine Affairs and Fisheries (MMAF) with the aim of working jointly to strengthen market access for Indonesian tuna products through certification. In 2019, with support from MMAF and the strong results from pre-assessment, the decision was made to enter into MSC full-assessment. In partnership with the North Buru and Maluku Fair Trade Fishing Association, Anova and PT Harta Samudra, in March



2019, MDPI facilitated the assessment of 123 vessels in the Buru Island handline yellowfin tuna fishery.

After a thorough process and rigorous assessment, today MDPI, the North Buru and Maluku Fair Trade Fishing Association, Anova, and PT Harta Samudra are proud to announce that the handline yellowfin tuna fishery on Buru Island has attained MSC certification. The North Buru and Maluku Fair Trade Fishing Association tuna fishery is the first handline yellowfin tuna fishery in the world, and the second in Indonesia, to be certified to the MSC standard. This represents years of development and marks a major achievement for Indonesian fisheries and MDPI alike.

The fishers who attained MSC certification represent members of the Fair Trade fisher associations MDPI has worked alongside since 2014. These fishers' catch will now carry two international labels, Fair Trade and MSC. As one of the world's largest seafood producers, Indonesia plays an important role in maintaining the health of our oceans and supplying seafood produce sustainably. The achievement of this MSC certification proves that through collaborative efforts between governments, the private sector, fishers and researchers as well as other relevant agencies, Indonesia can implement sustainable fisheries management.



REINFORCING: DATA COLLECTION, EFFECTIVE MANAGEMENT & TRACEABILITY



Indonesia has many unreported small-scale fishing vessels, despite the higher number compared to big-scale vessels which are currently the government’s focus for data collection. Therefore, in order to further enable a transparent and rule-complying fishery, MDPI has been actively conducting catch data collection and facilitating small-scale vessel registration.

As in previous years, catch data collection activities are streamlined with the needs of tuna fishery management. The data point collected among which are total catching, length-weight frequency, catching composition, bait usage, Endangered, Threatened, and Protected (ETP) species, other catches including the types of data needed to determine Catch Per Unit Effort (CPUE). Collected data got uploaded to I-Fish database, among others, to support the establishment and implementation of Tropical Tuna Harvest Strategy in Indonesia Islands Waters (WPPNRI 713, 714, 715) and became a supporter for the process of getting Marine Stewardship Council (MSC) ecolabel certification on 12 May 2020. Total port sampling data in 2020 was 3,756 data, with the total weight of 508,853 kg.

In addition to data collection by MDPI team, fishers are also encouraged to be actively involved in data collection, specially using the capture fishery logbook. The contribution of small-scale tuna fishers in Indonesia are that significant, so the capture information is highly important to be collected. MDPI with USAID SEA co-facilitate the simplified capture fishery logbook dissemination process for small fishermen; fishermen were given in-depth explanation on the importance of logbook data for sustainable fishery, also the recording simulation and fish identification training. This capture fishery logbook started to be disseminated to small-scale tuna fishermen community in east part of Indonesia on March 2020,

Specifically in the Province of West Nusa Tenggara, through one of Tuna Fisheries Co-Management Committee (KPBP) work plan to accelerate permits and increase legal fishery, the West Nusa Tenggara province government launched Fishing Ship Vessel Permit One-stop Administration Services (SAMSAT) at Fishing Port of Labuhan Lombok. This Fishing Ship Vessel Permit SAMSAT Services that was supported by MDPI have been officially launched by Vice Governor of West Nusa Tenggara, Dr.Hj. Sitti Rohmi Djalilah at Fishing Port Agency in Labuhan Lombok, Regency of East Lombok on pada 18 November 2020.

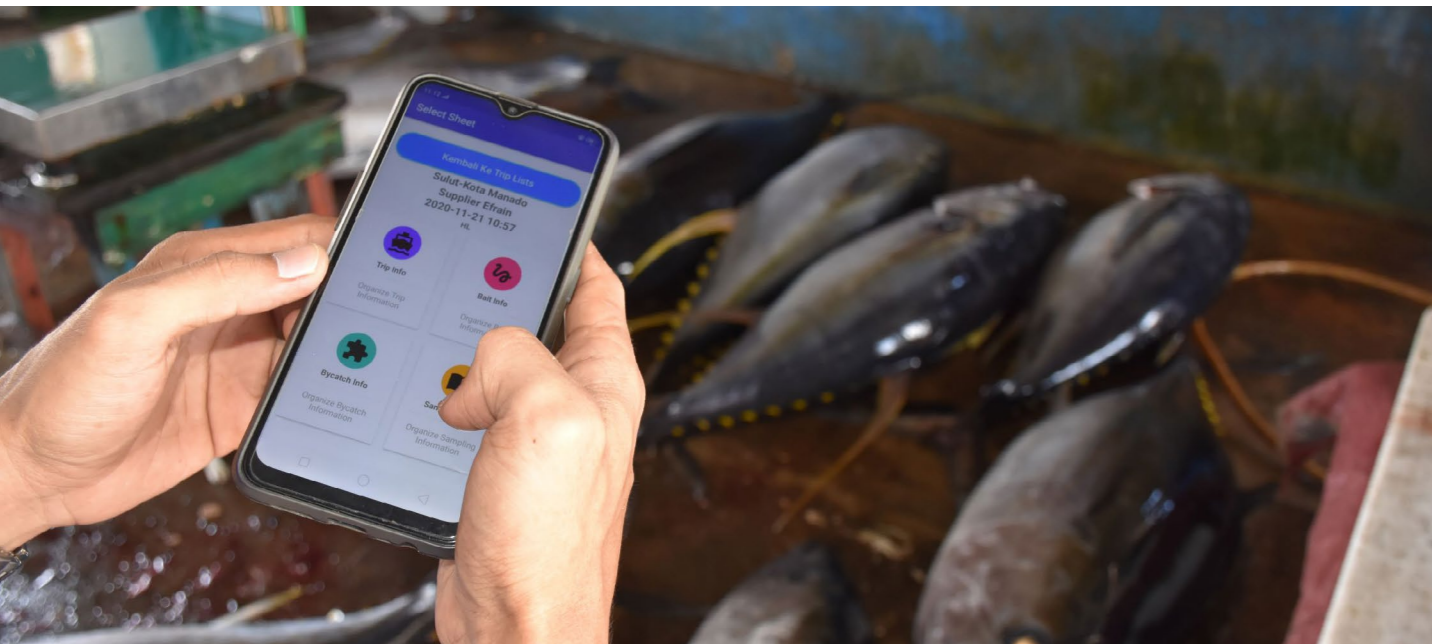


with tuna fishermen in North Maluku. Besides to record the capture fishery, logbook recording also become an important requirement to maintain Fair Trade USA Capture Fisheries certification and can be used as foundation when doing cross-check on fuel use or fish payment from supplier to fishermen.

In our support to implement legal fishery, MDPI collaborates with stakeholders like the Ministry of Maritime Affairs and Fisheries, Ministry of Transportation, Local government in the provincial/regional/village levels, and other organizational partners in facilitating vessel registration. The registration process begins by taking boat measurement as the first step of attaining a *Pass Kecil*, which is then used as supporting document in the process of attaining Proof of Registration (BPKP) for small vessels ($\leq 5GT$) or Fishing Permit (SIPI) for bigger boats ($\geq 7GT$). The number of vessels registered with the help of MDPI in 6 provinces currently sits at 1,193 units for *Pass Kecil*, 1,309 units for BPKP and 8 units for SIPI.

In relation to fishing management, it is well-noticed that the management used has to be people oriented. Therefore, stakeholders' involvement is a must to gain success. This motivates MDPI and Local Government, in this case Province Maritime Affairs and Fisheries Agency (DKP) to initiate forming Tuna Fisheries Co-Management Committee (KBPB) in the Province of Maluku, North Maluku, West Nusa Tenggara, East Nusa Tenggara, North Sulawesi and South Sulawesi that becomes MDPI work areas, as platform to match fishery stakeholders routinely in regency, province,

and national level. But due to COVID-19 pandemic in Indonesia since early 2020, KBPB Tuna Regular Meeting scheduled twice a year can only be done in the Province of West Nusa Tenggara and Maluku, while in the Province of North Maluku, North Sulawesi, South Sulawesi and East Nusa Tenggara can only be done once each. Aside from that delay, 2020 became the year when Guideline Book for Action Plan of Fishing According to Fair Trade Fisheries Standard in the Province of Maluku got published officially on Regular Meeting of KBPB Tuna Province of Maluku.



These days “traceability” is an important key factor in responsible fishery management. Therefore, information technology development is crucial to support the implementation of product traceability principles, from the sea to the plate.

For almost 8 years, MDPI has been implementing traceability-based technology, from boat trackers like SPOT Trace, TREKFish, and Pelagic Data System (PDS) to get to know catch areas, specifically to ensure capture activities are not done in protected areas. Aside from that, time-lapse camera and Reolink camera are also used to record fishermen activities, including looking at their catch and interaction with endangered or protected species. To collect port sampling data there is a latest 2020 version for I-Fish App, that made enumerator do data collecting system easier when boats unload on port and on other tuna fishery landing place. On supplier level, catch recording is done using Trafiz application, while recording is done at fish processing unit (UPI) using TraceTales™. With Trafiz dan TraceTales™, recording can be done in paperless method.

TraceTales™

Currently, there are 6 Fish Processing Units (UPI) across MDPI work areas implementing the TraceTales™ system and has made over 5,500 tons traceable tuna products. With this type of traceability scheme, MDPI is able to support efforts to prevent illegal products from getting into the legal supply chain.



WORLD FISHERIES DAY & SID 2020

To commemorate World Fisheries Day (WFD) and National Fish Day this year, MDPI organized a series of activities on 10 work areas spread in 6 provinces. The activity was done on 21 November-1 December involving 1,057 participants from various parties from school students, university students, youths and local government, including Maritime Affairs and Fisheries Agency, Sanitary Office, Army and Police. The chosen theme on this commemoration was “Clean Beach, Plentiful Fish, Healthy Life”, as many still dump their waste in the ocean.

poster making, boat-rowing competition, cooking and eating fish competition, also distribution of mangrove seed. As closing of event, the whole community was asked to sign a banner as sign of their joint commitment to maintain ocean and beach cleanliness.

On this WFD momentum, MDPI asked the fishermen community once more to clean the beach from waste and this year we noted that a total of around 2.3 tons of organic and non-organic waste got collected and handed over to local Sanitary Office. As another awareness raising effort, we also made education board about the danger of plastic waste to be put up on a public place, with hope that it can make the people wiser and immediately cut down plastic containers. This WFD activity also enlivened by some competitions like coloring and environmental campaign

MDPI also held Information and Data Sharing (SID) with fishermen and suppliers, a routine activity as a platform for fishermen to share their stories and illustrate the changes in fishery that they experience in the last 20 years, along with the reasons behind them, because they noticed drastic changes due to many factors, including the presence of damaging catching practice. They agree to keep on supporting sustainable fishing management efforts, including recording fishing logbook and boat registration, also willing to be actively involved in many traceability technology implementation and data collecting. At the end of the activity, MDPI shared fishermen activity report that contains their annual catching information that can be used as a guideline in doing catching activity up to their family financial management.





TROPICAL TUNA HARVEST STRATEGY IN WPPNRI 713, 714, 715

Since 2017, Indonesia have done fishing management action plan based on Harvest Strategy Framework for Tuna Madidihang, Tuna Mata Besar and Cakalang on WPPNRI 713, 714 dan 715. Harvest Strategy meant to ensure the utilization of tuna resource done sustainably and responsibly, to ensure food safety, poverty reduction, sustainable development and provide work opportunity.

OBSERVER PROGRAM

To strengthen Harvest Strategy (HS) composition in increasing data quality, MDPI also supports Observer program implementation from Ministry of Maritime Affairs and Fisheries (KKP). Observers on-board are also placed on tuna handline boat ≤ 30 GT on some MDPI work areas like Buru, Seram, Sanana, Bone, Ternate, Morotai, Kupang and Lombok. The observers have the task to personally monitor on boat by recording activity on the ocean until identifying catch results. Data collected by Observers will be beneficial for further verification of data and information collected by enumerators, Time Lapse Camera result and Vessel Tracker technology. The Observers also get routine refresher training to maintain the consistency of the collected data quality.

TECHNICAL DATA WORKSHOP

A series of workshops are scheduled to be done on December 2020, but the COVID-19 pandemic uncertain situation caused many activities to get postponed. Pre-Technical Data Workshop has been done on 10-11 December 2020 in Bogor, but the workshop with the stakeholders and Technical Data had to be postponed and rescheduled to early 2021.

MDPI actively participates in composing Harvest Strategy for Tuna Mata Besar, Tuna Madidihang and Cakalang on Indonesia Islands Waters WPPNRI 713,714, 715. MDPI participation done among which through contribution of handline catch result data, collection of rumpon data also collaboration on Stakeholder dan Technical Data Workshop since 2014. »

Saut Tampubolon
MDPI Fisheries Policy Advisor

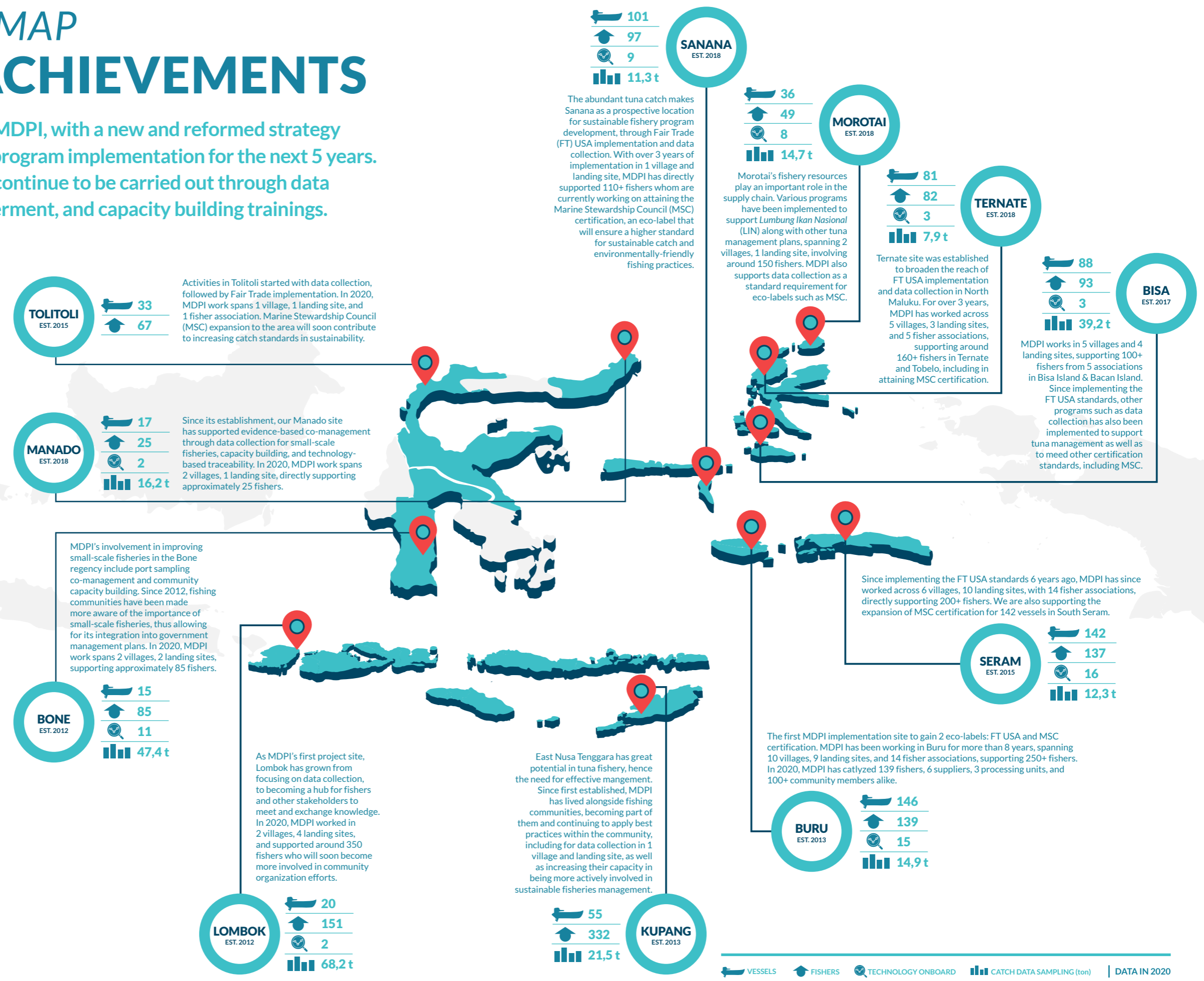
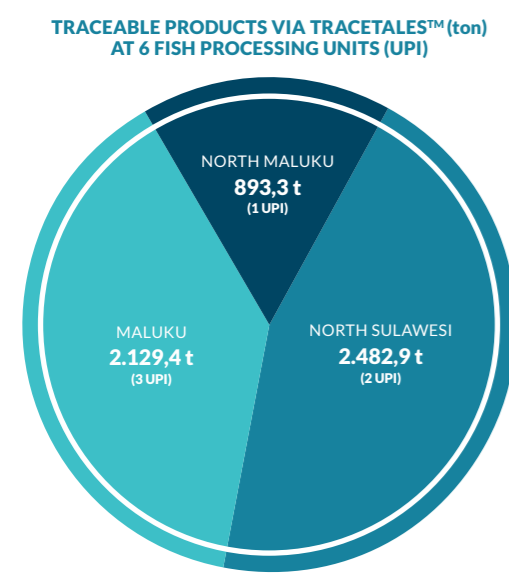
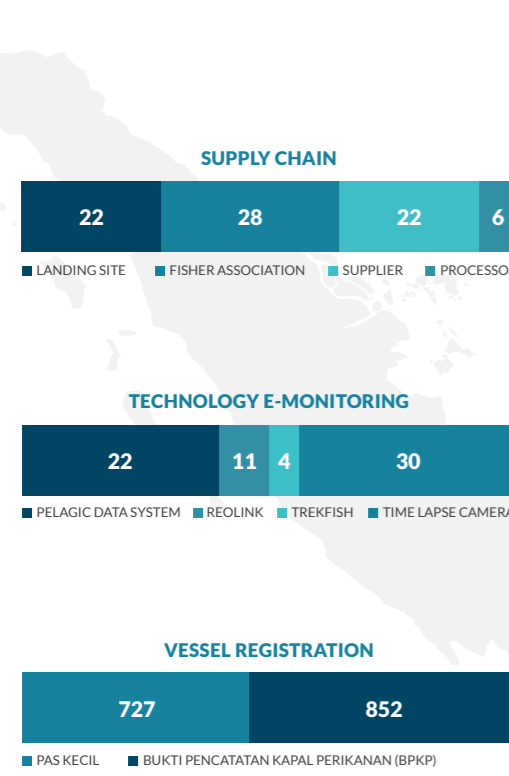
OTHER CONTRIBUTION

Based on the mutually agreed upon Harvest Strategy Framework, MDPI has so far made contributions such as:

- ✓ Perform data inventory on fish aggregating device (FAD) used by fishers that MDPI work with, with all data uploaded to Diva-tuna, which are 109 active FAD data.
- ✓ Suggests handline tuna fish (tHL) catching device category and it has been adopted by Directorate General of Capture Fisheries (DJPT) and Fishery Research Center (Pusriskan) to be used in HS Modeling.
- ✓ Submitting Tuna Hand Line Small Fishermen Characteristic report to Ministry of Maritime Affairs and Fisheries (KKP).
- ✓ Cooperate with AP2HI and IPNLF in constructing data collecting Protocol by observer on-board for tHL and it has been adopted by DJPT/Pusriskan.
- ✓ Submitting White Paper about strengthening rumpon management policy to DJPT.
- ✓ Contribute in Tuna Fishery Pre-Technical Harvest Strategy Meeting on WPPNRI 713, 714 & 715 done by Pusriskan.
- ✓ MDPI I-Fish Data from WPP 713, 714, and 715 (IAW) of 2019 have been adopted and approved by Ministry of Maritime Affairs and Fisheries to be tuna handline catching composition guideline on IAW, which directly adopted by SATU DATA-PUSDATIN Indonesia Tuna Fishery Annual Catch Estimates 11 Workshop on 15-16 July 2020.
- ✓ Compose tuna handline Data Collecting Protocol and have been adopted by DJPT/Pusriskan.
- ✓ Contribute in Catching fishery Observer training from Ministry of Maritime Affairs and Fisheries of 20 new Observers on 13-18 December 2020.

MDPI ON THE MAP REACH & ACHIEVEMENTS

2020 marks a new chapter for MDPI, with a new and reformed strategy being put in place to guide our program implementation for the next 5 years. Fisheries management efforts continue to be carried out through data collection, community empowerment, and capacity building trainings.



VESSELS
 FISHERS
 TECHNOLOGY ONBOARD
 CATCH DATA SAMPLING (ton)
 | DATA IN 2020



EMPOWERING FISHING COMMUNITIES

As reflected through MDPI's name, we believe that without involvement, development and community care, the sustainable fishery management improvement effort would not work. MDPI has done Fair Trade USA certification program for years as one of many platforms to actualize sustainable fishery and support the development of fishermen and the whole supply chain. Up to now, MDPI still keeps on increasing competencies on fishery community organizing aspect.

To finalize the FCO program implementation on 2021, MDPI organized community organizing training for MDPI staffs, both to the ones on the field and at Bali office. By the end of 2020, MDPI team gathered in Bali for 5 days to get materials on social analysis, facilitation techniques, issue identification, community organizing, popular media and briefly on basic photography. MDPI team also did a visit with Wisnu Foundation to some villages in Bali that were chosen as ecotourism model, to learn about their community

As part of the new strategy that we began implementing in 2020, MDPI has since reformulated some approaches relating to community-based development, including community organizing through our Fisheries Community Organization (FCO) program.

organizing. MDPI that works with fishermen communities on daily basis had a huge need of this kind of capacity building. The knowledge from this training can sharpen staff ability to identify problems and solve dynamics on the field, which will give impact on behavioral change to the better in the community. The plan ahead is that MDPI will make community organizing as one of our main focus to support sustainable fishery. We will continue supporting organization, vision/mission and objectives also other activities related to fishermen group and cooperation development. At the moment, MDPI is mentoring more than 30 fishermen groups and broaden working reach in the form of community organizing in each province within MDPI work areas.

CHAMPION PROGRAM

Since September 2020, MDPI started to identify program and agent of change, or also known as champions, on each work area to develop a more effective and thorough program, in order for the benefit to be felt on each community element, while still based on sustainable fishery principle. Champion model development on MDPI work area is suitable with strategic plan for the coming 2 years, related to the community development and strengthening to be actively involved in fishery management, specially through cooperation or group platform, until champion capacity building through training and information dissemination. Champion word that means winner, have a meaning in community organizing as individual or community that take part in changing an issue or program, that has an objective to increase public understanding into a movement for a better life. We truly hope that with this champion program and having a champion in a village will make a positive impact on the environment and the social community around it.



We will not be assisting them forever nor will we be able to work only by ourselves. These champions, village pioneers, are both the backbone and spearheads in embodying better fishing practices to sustainably support the livelihoods of fisher families, now and in the future. »

Nilam Ratna
FCO Program Manager

FISHER INSURANCE

Realizing that many work challenges faced by fishermen on the sea, Indonesia government make Fishermen Insurance Premium Assistance Program (BPAN) with Asuransi Jasa Indonesia (Jasindo) applies for the first year. Thanks to fishermen awareness on the importance of insurance, insurance premium payment on the following years are done independently by the fishermen, and by December 2020, 193 tuna fishermen in North Maluku (Sanana) area and Maluku (Buru and Seram) have owned their independent insurance, that also works as fishermen identification card. The process to do until the card is distributed takes 1.5 months and with good relation between fishermen, MDPI and Jasindo, the fishermen insurance process can be done well.



“SAFETY AT SEA” TRAINING

Catch locations over than 12 nautical miles, fish catching travel duration up to 20 days and big wave and storm oftentimes become threats for fishermen. As effort to minimize number of accidents in the ocean, MDPI works with many parties to do Safety at Sea (SAS) training and hope that fishermen will be able to understand basics of weather information and safety at sea, getting theory and practice on first aid, navigation and ways to ask for help in emergency. Series of SAS training began in February 2020 with Maritime Affairs and Fisheries Agency (DKP) in the Provinces of West Nusa Tenggara, BASARNAS (National Search and Rescue Agency) and BMKG (Meteorological, Climatological, and Geophysical Agency) for small-scale fishermen in East Lombok. It was then followed by SAS training was done in Tolitoli, Central Sulawesi with Tolitoli Navy, targeting all Fair Trade fishermen in Salumpaga village. During 2020 MDPI have facilitate 7 SAS trainings, including in Buru and Seram village in the Province of Maluku, and Sanana area, Sula Islands in the Province of North Maluku.

‘KUSUKA’ CARD

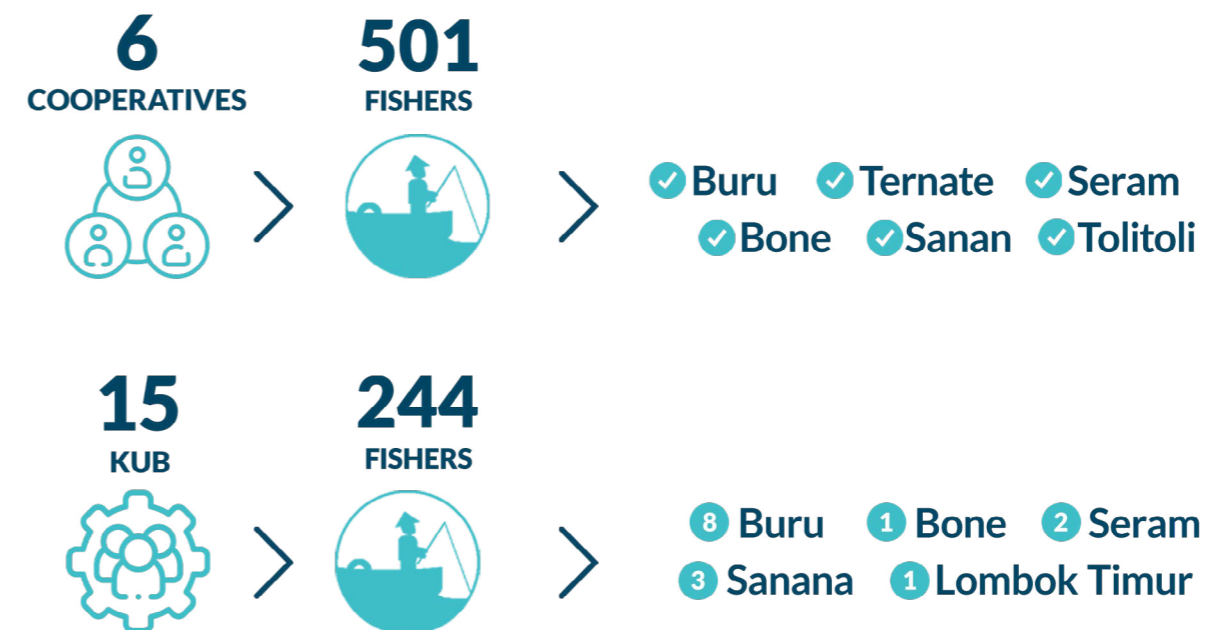
The Marine and Fisheries Business Owner Card (Kartu Pelaku Usaha Kelautan dan Perikanan), dubbed as ‘KUSUKA’, is an official identity card used by Ministry of Marine Affairs and Fisheries to identify those working in fisheries, as an effort to protect and empower, speed up services, improve welfare, and ensure the effectiveness of government-led programs. Fishers are the main actors in the fishery business, but many are still deprived of updated information and assistance in processing their KUSUKA card, due to them living far from the city. MDPI has so far assisted more than 700 fishers in attaining their KUSUKA card, namely in Lombok, Kupang, Buru, Seram, Ternate, Bisa, Morotai, Sanana and Tolitoli. Currently there are more than 350 fishers registered with E-KUSUKA.



ESTABLISHMENT OF FISHER COOPERATIVES & JOINT BUSINESSES

MDPI has supported tuna fishermen community development, also actors who work in fishery, through economic development and various social improvement programs. One of many targets that MDPI wants to achieve in the coming 5 years is the establishment of 30 fishermen cooperation. To help fishermen out of economic difficulties due to COVID-19, MDPI is encouraged to accelerate establishment of 6 cooperations in some mentorship areas, among which are the Regency of Bone, South Sulawesi; the Regency of Central Maluku, Maluku; the Regency of Tolitoli, Central Sulawesi; the City of Ternate and the Regency of Halmahera, North Maluku. The existence of established fishermen cooperation is a solution to improve fishermen’s life through business implementation including the trading of fish, fuel, catching devices and groceries, also savings and loans business and other supporting businesses.

In 2020 there are a total of 440 fishermen and fishermen’s wives mentored by MDPI joining cooperation. Previously, MDPI have facilitate establishment of 1 fishermen cooperation in January 2020, on Wamlana village, the Regency of Buru, the Province of Maluku with 169 members, consist of Fair Trade (FT) & Marine Stewardship Council (MSC) certified fishermen and their wives. This cooperative was established as 6th year FT certification requirement, but still has the same agency foundation with 5 other cooperations, which is fishermen community independence in economics and organization. By legalizing the cooperation and Joint Business Group (KUB) hopefully there will be more access to business capital and access to mentorship and training to build member capacity and gets more affordable.





ADAPTING THROUGH THE PANDEMIC

Responding to the Coronavirus Disease (COVID-19) pandemic throughout 2020, MDPI became one of many organizations that had to quickly adapt and launch various emergency responses in order to support all of the fishing communities that MDPI work with.

FAIR TRADE EMERGENCY PREMIUM FUND

The drastically declining tuna buying price and the decrease in demand of tuna from Japan and America at the start of the pandemic had caused many restaurants to close down, which ultimately affected the whole tuna export chain. As an effort to decrease COVID-19 spread, many fish processing companies had to closed down temporarily due to many quarantine appeals. For Indonesian tuna fishermen that export their catch globally, they have to accept selling price that is close to local market price. These different factors caused fishermen to get their daily income to fulfill their primary needs. As a quick response to COVID-19 pandemic, Fair Trade (FT) USA made a policy that allows FT Premium Fund to be used for Emergency Program during the pandemic. Group Premium Fund usually allocated to run activities planned by the group like establishment of cooperation and various trainings for fishermen. The total of Premium Fund of Rp257.550.000 this year was allocated for emergency response program, ranges around Rp5.000.000-Rp52.000.000 for each group to procure different necessities like rice, sugar, cooking oil, and other necessities, also mask and disinfectant. By end of 2020, all necessities have been distributed to the total of 432 families in group villages, including for widows and orphans. With all the prolonged uncertainties in the world in this pandemic time, MDPI keep on responding to group needs adaptively and give confirmation of the sustainability of Emergency Response Program and fund availability.



Fisher Associations (FA) that have carried out the Emergency Response Program:

TOLITOLI
FA Lumba-Lumba

SERAM
FA Tuna Yapana
FA Tuna Tunas Beringin

BISA
FA Tuna Jaya
FA Usaha Bersama
FA Beringin Jaya
FA Samudera Mandioli
FA Usaha Laut

Fisher Associations (FAs) recommending the Emergency Response Program:

BURU
FA Wamrugut
FA Waeplabung
FA Latamiha
FA Setia Selalu
FA Labuang Barat
FA Tagalisa Tuna

SANANA
FA Tuna Bajo
FA Sang Jaya
FA Berkah Tuna

MASK DISTRIBUTION

In support of the government's efforts to curb the spread COVID-19, throughout the month of May 2020 MDPI also distributed face mask for free. Over 2,000 cloth masks were distributed for tuna fishers and their families, as well as suppliers and warehouse staffs across all MDPI sites. Around 60-300 masks were handed out in each area, enthusiastically welcomed by all fishers who were grateful for the free masks, since masks were not quite affordable and difficult to find in some areas at the time.



RAPID ASSESSMENT

The rapid spread of COVID-19 in Indonesia, along with series of social limitations by the government affected fishermen activities. Fish price drastically drops, production process and distribution chain were cut-off; and these caused fishermen to have difficulties to sell their catch. When the pandemic indicated to affect socio-economic aspect of life, MDPI launched Rapid Assessment of COVID-19 Effect on Tuna Handline Fishermen in MDPI work areas in the Province of Maluku, North Maluku, North Sulawesi, Central Sulawesi, South Sulawesi, West Nusa Tenggara (NTB) and East Nusa Tenggara (NTT). The assessment done in the period of 20 March to 5 May 2020 indicated that the fishermen who suffered most are the one-day fishing fishermen in Maluku, North Maluku, North Sulawesi and Central Sulawesi, then the multi-day fishing fishermen in NTB, NTT, South Sulawesi and North Sulawesi. Tuna price decrease ranges around 25%-37% (one-day fishing) and 17%-23% (multi-day fishing). Catching operational cost don't decrease because there is no decrease in fuel cost. But it is a concern that if fish price on fishermen level keeps on going, fish catching business would be no longer feasible.



During the first weeks of September 2020, the Fair Trade (FT) audit was carried out, involving all tuna fisher associations which MDPI work with, including suppliers and processors that are part of the FT tuna supply chain. Like many other activities this year, the FT audit process which took place from 2-11 September 2020 also became the first ever to be conducted virtually.

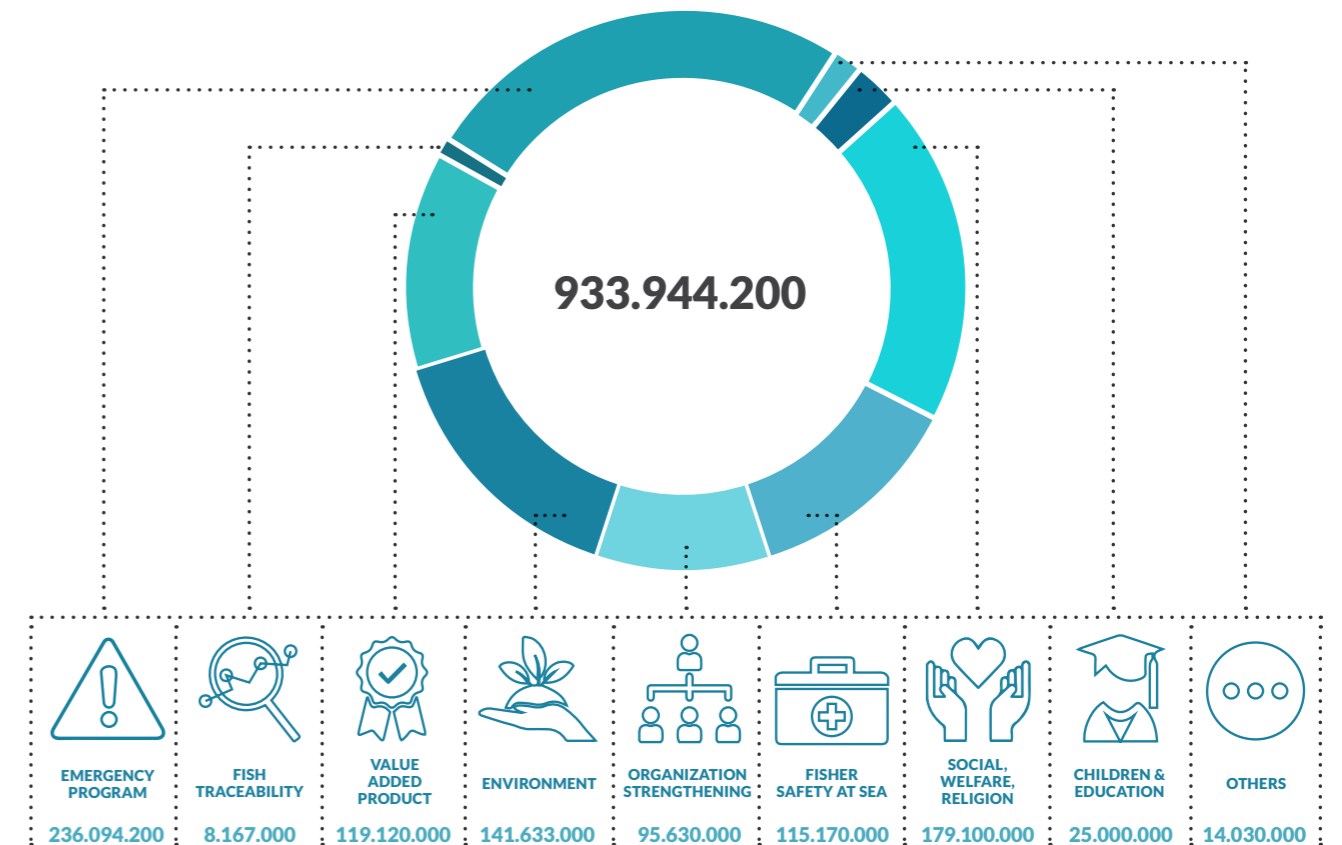
To guarantee transparency and accountability of the whole Premium Fund use program implementation, FT USA establish a set of requirements that have to be fulfilled by certificate holder and other related parties, like performing work process according to set standard and review to identify all needs that can be supported by the Premium Fund, that can also be accountable, to keep the owned FT certification.

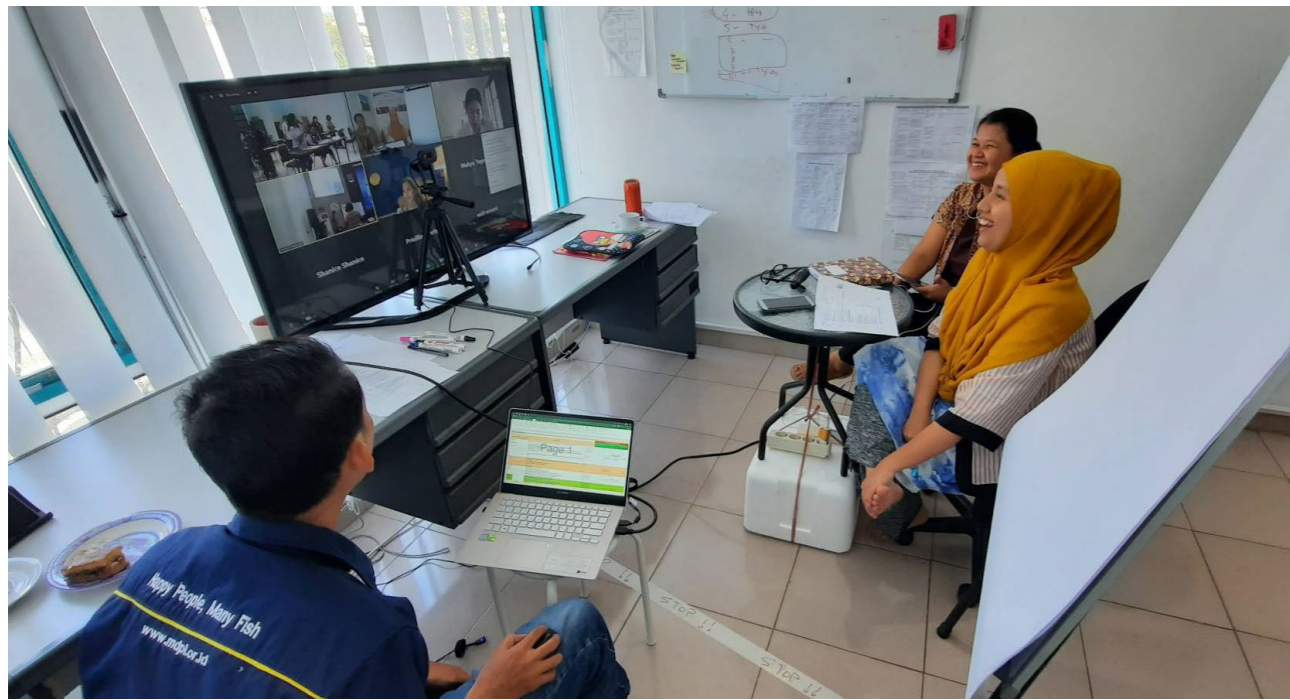
For the total of 8 days, including virtual opening meeting, in-depth interview and finally closing meeting, MDPI team mentored the total of 8 fishermen groups, 7 suppliers and 3 tuna product processing companies across Maluku, North Maluku and Central Sulawesi. By then, flight and in-person meeting were strictly limited due to the spread of COVID-19 pandemic, so this audit period became its own challenge for MDPI team who coordinate it online. The location of most fishermen groups that are hard to reach by communication network is a challenge in doing virtual audit, specially on bad weather, also distance between islands that had to be traveled by MDPI team to facilitate each group with a set of electronic devices, to support communication through video call with auditors in Bali and Central Java.

In virtual audit process, Fishermen Group/Committee was interviewed online by auditors before doing individual interview with some fishermen of each group that were randomly chosen by the auditors. Through video call, landing site and boat condition audit were performed by showing each landing site and fishermen boat condition to auditors, while suppliers were individually interviewed and asked to show their mini-plant condition live during the video call. Online interview with fish processing unit or company (UPI) were represented by the managerial person in charge, Human Resource Department (HRD), Work Safety and Health Management System (SMK3) and production, also show the thorough factory conditions.



FAIR TRADE PREMIUM FUNDS 2020 (IN IDR)





TRAFIZ APPLICATION TRAINING

As part of financial recording improvement for economic development, MDPI made a Trafiz application training, an Android-based electronic financial recording system initiated by MDPI supported by USAID OCEANS, for women fishery businesswomen /tibo-tibo in 3 locations in North Sulawesi: Manado, Bitung and Sangihe. It was hoped to give tibo-tibo new insight and habit to record all their catching, to support wiser economic development and sustainable fishery management.

They usually record their business transaction manually on books, but in the future, they will be mentored towards digitalization process using Trafiz application on their Android gadget. By using Trafiz, they only have to input data according to the set format on the application, then the application will automatically count their profit/loss. Their input on data of fish type and weight, also catching area are needed to support traceability system, so we can find out origin of caught fish and number of resource potential in each location. As final report, they can download weekly, monthly and annual financial report as sales report that can be used for many purposes.

CAPACITY BUILDING 4.0

In an effort to continue program implementation after having been postponed for several months due to strict health regulations, the INVEST team designed a virtual training to help restart the series of activities which still needed to be carried out, despite the new normal way of life caused by the COVID-19 pandemic.

Since early 2020, MDPI through INVEST Project have done a series of trainings for fishery driving forces in North Sulawesi, among which are fish seller women (also known as “tibo-tibo” in local language) in Manado, Bitung and the Regency of Sangihe Islands.

On 31 August 2020, MDPI team in Bali office gathered online with the field team and participants who gathered at Bitung Ocean Fishery Port Hall for “Financial Management Training for North Sulawesi Fishery Community” that also attended by Bapak Tri Aris Wibowo as Head of Bitung Ocean Fishery Port. This training was a continuation of a series of trainings done before in Manado, Bitung and Sangihe on the use of financial application and fishery community empowerment. This training talked more detail about improving community awareness in fishery and financial

management for fishery economic sustainability, using training method that encourage participants’ active involvement.

As the COVID-19 pandemic is still going on, on-field training activities done according local health protocol As the number of participants were limited, there were 2 batches of training; of 55 target participant split into 2 classes of 25 to 30 people per class and every participants had to wear mask, wash their hands before entering training room and stay distanced from each other during training.

WOMEN EMPOWERMENT

Women have crucial role in fishery chain, among which is selling caught fish to consumers. Related to this, MDPI did a second training titled “Women Empowerment Training for Fishery Community” focused on discussion on gender, women empowerment, financial management, and their function and responsibility on fishery management in Indonesia. Their husbands and male partners were also invited to join the training on a different day to keep the women’s privacy and comfort, to convey their opinions on gender or gender-based violence issues. At the end of the training, the male participants were committed to support the tibo, by creating safe and gender responsive tibo work area, also support tibo women role in sustainable fishery management, so they can give inputs in regional and provincial meetings.

Swara Parangpuan NGO and Woman Empowerment and Child Protection Agency of the City of Manado were presented as expert speakers. The training in Tahuna, Regency of Sangihe was attended by boat owners, fishermen, and DPPPA of the Regency of Sangihe Islands.



FISHERIES ECOSYSTEM DRIVING FORCE

MDPI not only works to improve fishery management, but also ensure that fishing communities can continue to thrive. In order to achieve that, we continue to build partnership and, most importantly, leadership.



TONI MARTAWIDJAYA

Toni Martawidjaya has been supporting MDPI programs since 2013 when Maluku was started to be developed as one of MDPI work areas, especially on Fair Trade (FT) program implementation on Assilulu village, Ambon. When Pak Toni moved to Buru early 2014 as supplier of Harta Samudra supply chain, he was actively involved in establishing FT fishermen group and Buru FT committee with MDPI, and motivated other suppliers of that supply chain to establish FT fishermen group. Within one year, there were 9 FT groups spread in 6 villages in North Buru. In the same year, he helped introducing FT in South Seram area, so that in 2015, 5 South Seram FT fishermen groups got established. When Pak Toni moved to Bajo village, Sanana, Sula Islands, he also asked MDPI to establish FT

groups there. His non-ending efforts also proved successful, so that on October 2018 MDPI officially entered Sanana by establishing 3 groups in Bajo village and in 2019 Sanana FT Committee reached total Premium Fund of 1 billion rupiah. His support for the sustainable fishery did not stop there; his willingness to consistently supported the whole MDPI program in Sanana, including fish data collecting, enable MDPI team to keep on getting catch result data, both from mentored fishermen and his purchase record.

Imran Muhare, a Fair Trade (FT) tuna fisher in the Sula Islands, became an influential fisherman in establishing Fisher Associations in Sanana. Pak Imran became part of committee and enumerator (fishermen's catch recorder) of Tuna Bajo Group. His contribution was so great on development and implementation of many group activities, driven by his concern for fishermen welfare and success of sustainable fishery management. Although he is working as tuna fisherman that joins work unit in Social Agency of the Regency of Sula Islands, his skill in time management and his desire to keep on learning became his key of success in doing all his works. His high tenacity and curiosity made him understand the many complicated FT standards easily, sensitive of group condition and always ready to finalize group document.



IMRAN MUHARE



HASBULLAH

This tuna supplier from the Bone Regency, South Sulawesi started his fishery business in 2015. Hasbullah joined MDPI activity for the first time on South Sulawesi Tuna Fisheries Co-Management Committee meeting in the Regency of Bone in 2018. Hasbullah existence in KPBP spark his interest to collaborate with MDPI and suggested MDPI to do data collecting on his fish landing. He also gave access to get monthly unloading information and other informations from his place. After actively involved in South Sulawesi KPBP, Hasbullah got the opportunity to join regional KPBP activity in Jakarta, to represent South Sulawesi supplier with some fishermen from Bone. "There were a lot of knowledge to take about data collecting, which

turns out to be crucial for fishery management," he said. Since then, he even didn't feel good if his fishermen's catch not recorded. This Bone tuna supplier also aware of the importance of fishermen independence organization-wise and financially, therefore he supports the establishment of Bone Fishermen Group in 2019 with Fishery Councilors and MDPI, and keep on actively giving his input in that group development process which also targeted to be Fishermen Cooperation in 2021.



PT NUTRINDO

PT Nutrindo Fresfood International, located in the City of Bitung, the Province of North Sulawesi, is a Fish Processing Unit (UPI) that is implementing TraceTales™ to record fish processing data. The system that was developed by MDPI got introduced in North Sulawesi in 2018 under USAID OCEANS, to help UPI shift from manual (paper-based) recording to the digital one. As a company that has British Retail Consortium (BRC) standard in their product processing, Nutrindo has a supply chain from boat, supplier, UPI to consumers, that must have a complete data recording system, supported by administration staff in each production process stages. The use of traceability system can benefit the sustainability of fishery resource in general and Nutrindo positively welcome the effort to transition

to digital recording using TraceTales™ that also speed up data recapitulation and helps minimize recording error risk. A series of process have been done by MDPI in 2020, from observation step/ scoping fish processing process, system designing, testing and implementation of TraceTales™. Related to COVID-19 pandemic condition in early 2020, system training process for some company representatives had to be done virtually, before entering a 3-months trial phase. In July 2020, the TraceTales™ application started to be used by Nutrindo independently to record all receival process, processing to product delivery. Hand-over of TraceTales™ software product from MDPI to Nutrindo was done officially in September 2020, that was also the end of MDPI technical support period to Nutrindo and then shift to PT Sahabat Laut Lestari (SLL) as the beginning of maintenance contract between Nutrindo and PT SLL.



PT SAHABAT LAUT LESTARI

The fishing industry, both in Indonesia and the world, still face the challenges of fish laundering; a term for fish caught illegally but are smuggled into legal supply chains. The establishment of PT Sahabat Laut Lestari aims to offer a series of solution to this issue, starting from the fishing process to product distribution to customers.

After its establishment in October 2019, PT Sahabat Laut Lestari (SLL) officially started their operational and business activities in 2020. One of their achievements on the early stage of operational activity was developing price structure for TraceTalesTM implementation, a digital recording system that initially developed with donor relief fund through MDPI, and now has become the main product of PT Sahabat Laut Lestari. After having price structure, PT SLL focused on evaluation and dissemination to some companies who are MDPI partners in development and implementation of TraceTalesTM on fish processing unit. There were three processing companies, Harta

Samudra, Aneka Sumber Tata Bahari and Blue Ocean Grace International who have been partnering with MDPI on developing TraceTalesTM. In this process, all three companies shifted from MDPI partner to be clients of PT Sahabat Laut Lestari and started to use TraceTalesTM as a paid product.

Aside from that, another important achievement of PT SLL in 2020 was the creation of the company vision and mission along with early-stage business analysis, which were written on the official company profile with complete communication material. A company logo was developed, along with a website and social media

channels of PT Sahabat Laut Lestari as various forms of company communication and information outlets.

Although it was established as MDPI's business counterpart, PT Sahabat Laut Lestari is administratively separated from MDPI, both in financial and human resource administration. Regarding its financial administration, in 2020 PT SLL has also conducted a separate financial report audit and will publish its own annual report.

scope of business

- ✔ Traceability Information Technology
- ✔ Fisheries Certification
- ✔ Fisheries Improvement Program

why us

- ✔ Seven years of experience in FIM with excellent commitment and teamwork
- ✔ Competent resources and succeeded to create independent traceability product
- ✔ Experienced with companies that prioritize traceability
- ✔ Experienced in developing and mentoring small scale fishers in remote areas
- ✔ Wide knowledge related to Indonesia's fisheries implementation standard and methods



PT Sahabat Laut Lestari

Jl. Bypass Ngurah Rai
Ruko Istana Regency Blok S-7 Pedungan
Denpasar Selatan, Denpasar, Bali

M: 0811 3820 5400

W: www.sahabatlautlestari.com

E: info@sahabatlautlestari.com

MEET THE TEAM



Bang Hadi, as he used to be called by his friends in MDPI, is a senior staff who now works at Lombok MDPI site. Hadi joined MDPI on pilot project implementation on tuna handline fishery data collecting in Lombok in 2012. Aside from working on data collecting, he was also actively doing fishermen community strengthening, including for fishermen's children in Lombok, and his experience in approaching tuna fishermen and suppliers became an important factor on doing a good data collecting program. His interest to work in fishery program was based on his desire to find a useful new knowledge that he can apply among the fishery community where he came from.

This Ambonese lady with English literature educational background has been working in MDPI for 2 years, started at being Buru Island Fair Trade (FT) Assistant, then became North Maluku FT Supervisor, until got the trust to be Maluku Site Leader in 2020 to coordinate all MDPI work plan in Maluku area. Sri is an adaptable person, loves learning new things, and understand how to position herself to be approachable by fishermen and the community where she works at, which helps her to do her field work. Sri loves to share knowledge with fishermen, community, and her team mates, and doesn't hesitate to ask questions. She proved that the different educational background with her team mates is not a hurdle from success, as long as there is willingness to learn from experience, take chances and develop herself. Her biggest motivation to work with the community is the pride and joy looking at the result of her work benefit others. The positive change on people's understanding and behavior due to her hard work with her team became her personal bliss. "Because we were directly involved in the process, we feel the pride and joy looking at what we work so hard for and conveyed benefits the community," she said.



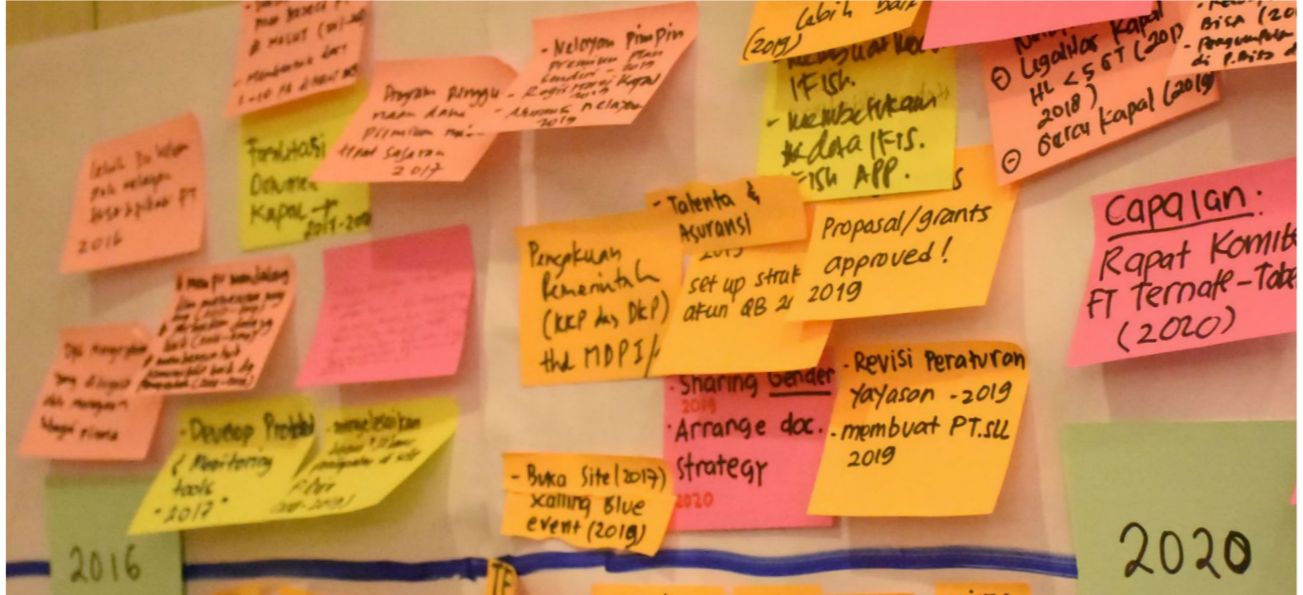
This MDPI programmer, who usually goes as Baim, joined the team in October 2019. Although quiet, his adaptation skill and insightful thinking has made him a crucial part of the MDPI database and data collecting application development. Since he joined, Baim has improved the I-Fish application, including developing I-Fish data analysis dashboard development, data reporting programming system development, and I-Fish database setting. His analytical skills and fast response towards various program development troubleshooting, on top of his knowledge on technology development direction and function became his signature on keep on giving programming technology innovation. As an environmentalist, working in fishery field makes him happy to be able to serve and spread information on fishery condition to support sustainable fishery ecosystem.



Karen Villeda joined MDPI in early 2020 during an organization transition period, the start of the Covid-19 pandemic, implementation of a new strategy, and the closure of multiple projects. Her approachable and positive attitude made the transitions seem easy. With a learning approach, her ideas and questions in the meeting push our team to think out of the ordinary box, and achieve better solutions in our implementation. By trusting her direct reportees, she gives them room to flourish and identify opportunities for them to increase their capacity enabling them to do their jobs better.

MDPI is made of a team of people with various skills, united by the desire to build a sustainable fishery ecosystem in Indonesia. The whole MDPI team keep on ensuring the work they are doing can also benefit small-scale fishing communities.

MDPI TEAM



ORGANIZATIONAL DEVELOPMENT WORKSHOP

In 2019 MDPI decided to reformulate its approaches, by creating a new strategic plan. The 2020-2025 strategy development process identified the need to overcome some existing challenges in order to achieve the goal of becoming a more sustainable organization. During this transition period, MDPI reformed organizational structures and mechanisms, including increasing staff capacity in accordance with the vision and mission of the new strategy. To support this new development, MDPI organized a development workshop with external facilitators, which was attended by 35 staff from all project sites. This workshop is part of an MDPI Foundation capacity building effort supported by The David and Lucile Packard Foundation for Organizational Effectiveness.

SEXUAL HARASSMENT WORKSHOP

Over the past 5 years, the demand for Sexual Harassment Training in the workplace has increased significantly among Non-Governmental Organizations (NGOs) in Indonesia. An organization is deemed negligent when sexual harassment occurs in the workplace but the required steps to protect the harassed are not taken. In order to prevent such misconducts, the organization must investigate all complaints of harassment and take effective steps to prevent recurrence (including disciplinary action or termination of employment). Sexual harassment workshops can help employers, including managers, understand the right approaches when they become aware of or suspect sexual harassment in the workplace. Trainings such as this, supported by a sexual harassment prevention policy, helps employees feel more valued while also setting clear expectations regarding employee behavior. Regardless of whether state law requires a sexual harassment training or not, conscientious organizations will view this valuable training as a wise investment. As an organization with diverse working teams, spread across numerous locations in Indonesia, MDPI recognizes the importance of this training for all staff members. The training was conducted in Bali and attended by 35 MDPI staff members from all project sites.

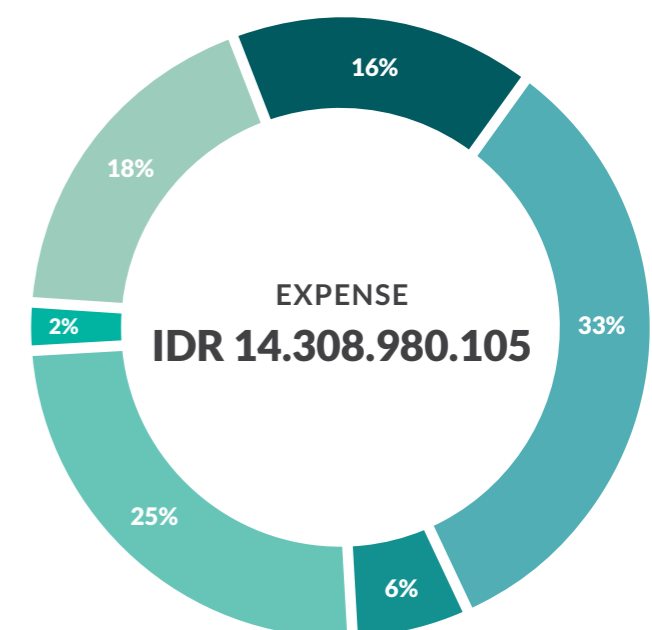
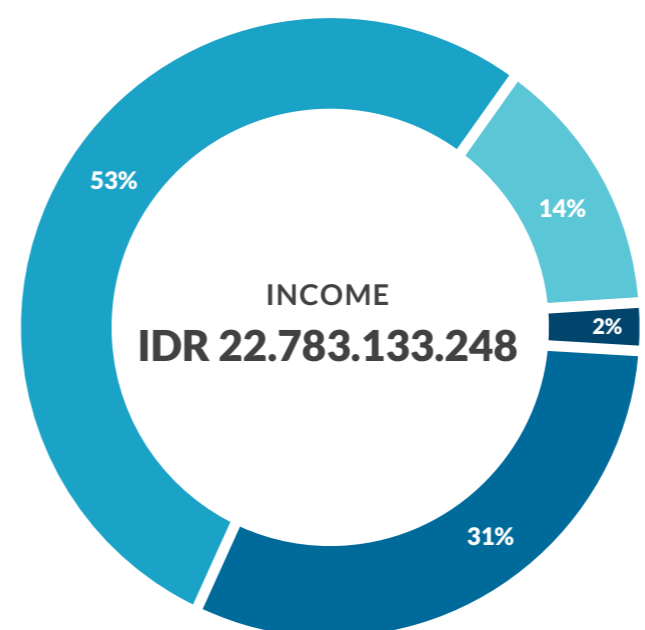


STAFF

A. Riza Baroqi	Herman Peudada	Prisillia Morley Loijens	Adjie Dharmasatya
Ade Novia Putri	Hernot Reits Jon Loudoe	Putra Satria Timur	Made Ory Sukerta
Agnesia Dau	Hizran Sampalu	Rahman Pelu	Akiko Sabrina Sukardi
Agustina Nilam Ratnawati	I Gusti Ayu Anastasia Sukma Putri	Riandi Habonaran	Kadek Bayu Candra Gotama
Ako Prasetyo	I Wayan Widiyantara	Ridwan Kamarullah	I Komang Darma Yasa
Alief Dharmawan	Ibrahim Tauhid	Rui Xavier Nunes	Kesya Eliana
Amrollah	Ida Ayu Adnyani	Safiril Henaulu	Anis Nur Rahmawati
Antonius Witin	Iksan Bessy	Sahril	Adjie Dharmasatya
Ardan Firmansyah	Janawi Akebai	Santri Dinalhusna	Nur Elviani Marasabessy
Arif Sapril	Juchairi Azrin Yusuf	Saut Tampubolon	Dewi Kartika
Arroyan Suwarno	Karel Yerusa	Siti Zulaeha	
Arсандy Kaledupa	Karen T. Villeda Ortiz	Sri Sumiati Jalil	
Asis Buton	Kurniawan Eko Susetyo	Sufira Audila Morotiya	
Bachori Dhian Pratama	La Djamali	Thomas Morre Rodja Aso	
Bismirkin Hasja Marasabessy	Marwan Adam	Umi Mandasari Tuasalamony	
Chirstian Banera	Muchdar Ayub	Untung Ayudia Musli	
Eko Octavianus Chalim	Muh. Alwi	Wahyu Teguh Prawira	
Eva Stephani C. Mangunsong	Muhamad Arman Ahmad	Widi Artanti	
Gajali Fatrauba	Muhammad Subhan Murid	Wildan	
Gladys Giacinta Poluan	Muhammad Taeran	Yasmine Simbolon	
Hairul Hadi	Ni Made Artini	Yoon Pulu	
Hendri Heni Tiala	Novita Ayu Wulandari	Yunita Mardiani	

INTERN

FINANCE REPORT



- Foundation
- Fundraising
- Industry
- Fisheries Improvement
- Public Funding & Multilateral
- Supply Chain
- Others
- Fair Trade
- Operational
- FCO





2020 Annual Report
Yayasan Masyarakat dan Perikanan Indonesia
www.mdpi.or.id