



Newsletter #1 August 2015



Fair Trade certified Handline fisherman in the Moluccas. Photo credit: Paul Hilton

The Value of Happy People, Many Fish!

I am so happy to introduce this first edition of the MDPI newsletter. We aim to make this a regular publication and a way to keep all our partners in touch with news and developments which relate to MDPI's work and the organization in general.

As you may know, MDPI has grown fast in recent years with an expanding portfolio of programs and activities and hopefully of worthwhile results and improvements. I am so proud of our team on the ground working day to day to achieve the MDPI vision. I am also really excited about the growing capacity of our management team, handling the expanding programs with enthusiasm and ease. Additionally, I would like to acknowledge the strong partners and collaborators we work with for the implementation of all our projects, from fishermen, to government, to universities, other NGOs, foundations and last but not least industry...."there are no enemies in sustainability, only friends and partners" and we thank you for being one of those!

I feel that as we grow we will have more and more work and projects in our three main departments, which are Supply Chain Improvement, Sustainability and Fair Trade. I hope that with this newsletter we can regularly update you all on what is going on in each of those departments and what is really happening on the ground with the fishermen.

This first newsletter will lay the background information for our organization and its 3 main departments and later updates will delve more deeply into individual programs. Enjoy the read!

Exciting year ahead! Keep the spirit high and remember about fish and fishermen.

Aditya U. Surono

Executive Director, Masyarakat Dan Perikanan Indonesia

Our Programs

1. Sustainability Program

This program is focused on the concept of Fishery Improvement Programs (FIP) aiming for Marine Stewardship Council (MSC) certification. Through this department we aim to support industry do engage in improvements while supporting the needs of government with regards to improving management of the fishery. The main activities include a port sampling program called i-Fish, the development of co-management systems to increase multi-stakeholder engagement in fisheries management, community capacity improvement and involvement and support for the government's role in the development of fisheries management.

Read more: <http://www.mdpi.or.id/index.php/our-program/data-collection>



Data collection in the field. Photo credit: MDPI

2. Fair Trade Program

MDPI, in its role as implementation partner to the certificate holder Anova LLC, has supported the implementation of the world's first Fair Trade certified wild caught fishery program. We have been implementing the Fair Trade standard for capture fisheries of FT USA across various sites in Maluku for the last 1.5 years and have recently expanded the program to other Indonesian sites, to date all focused on handline caught yellowfin tuna. Malukan Handline yellowfin tuna has become the first FT USA certified fish to reach the market, now being sold in Safeway stores in parts of the US.

Read more: <http://www.mdpi.or.id/index.php/our-program/fair-trade>

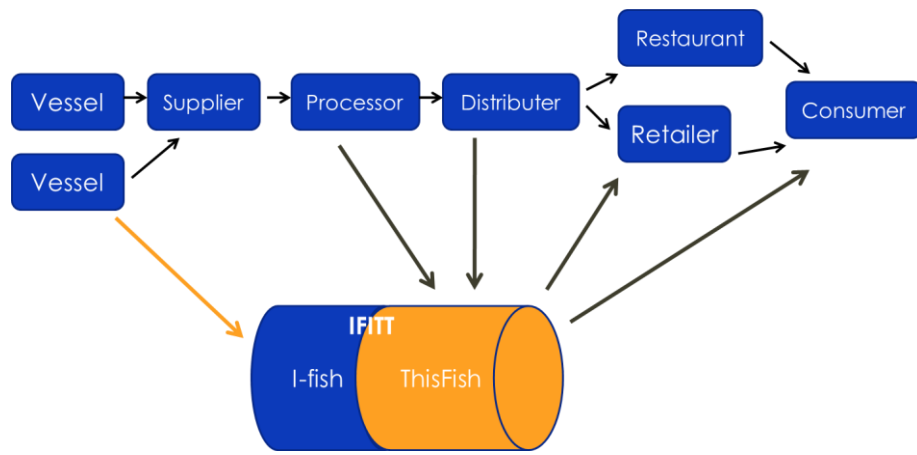


Fishers Association joined FT Program. Photo credit: MDPI

3. Traceability Program

With a three-year fund from Adessium foundation, an integrated research project managed by Wageningen University has designed IFITT (Improving Fisheries Information and Traceability Tuna), which aims to design a traceability system that brings together fisheries data and supply chain data into one system, creating an information hub which feeds the needs of many and varied stakeholders. MDPI is the implementation partner of Wageningen University on site in Indonesia, working together with ThisFish.org who brings a consumer facing traceability system and traceability expertise to the project.

Read more: <http://www.mdpi.or.id/index.php/our-program/traceability>



IFITT: Combining supply chain data with fisheries data

News From MDPI

More Fishers Associations Joined Fair Trade Program

In the beginning of the program, there were four Fishers Associations (FA) agreed to join the Fair Trade program. Now we are working with 25 FA across various sites in Maluku and Sulawesi.

Fishermen are getting excited to join the program because they realized that Fair Trade program has fundamental principle about Structural Requirements, Empowerment and Community Development, Human Rights, Wage / Salary, Working Conditions and Access to Services Resource Management and Terms Of Trade.

Fair Trade program is also helping to improve community livelihood because for every Fair Trade Certified tuna sold, Fishers Associations will receive Community Development Premium Fund, which is 10 percent of the dock-side price. They can invest the fund in community projects like education, environment and healthcare.

DMC (Data Management Committee)

DMC is a localized co-management approach to fishery management where stakeholder involvement in decisions made locally is supported. DMC meeting gathers stakeholders from government, fishermen, industry, NGO and universities to discuss fisheries data collection, especially for tuna and the potential capacity of that data to influence management.

MDPI has been instrumental in developing, strengthening and ensuring implementation of data management committees in three provinces (NTB, NTT, Moluccas). MDPI aims to continue expansion of these networks in all areas where port sampling is active. MDPI also aims to work on a provincial and a national level with government to develop a structure which makes these data management committees stronger and potentially giving them recognition and relevance within fisheries management within Indonesia. MDPI supports a wide range of collaborative/interactive workshops and trainings carried out at the provincial level and incorporating DMC members.

Currently, MDPI's Sustainability team is planning to conduct three DMC meetings in August and September for East Nusa Tenggara, West Nusa Tenggara Barat and the Moluccas paired with capacity building for members on data management and sampling coverage.



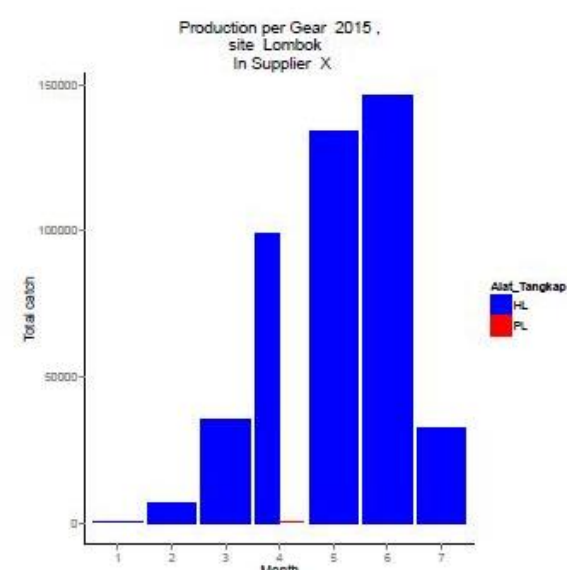
DMC Meeting in the Moluccas, March 2015. Photo credit: MDPI

I-Fish Development

I-Fish is an Indonesian fisheries information system for fisheries related stakeholders, from district, province, and national level. They could be government, universities, NGOs, industries (fishermen, supplier, processor and exporter) and experts. I-Fish is a system to store, monitor and analyze capture fish data from all landing sites that actively submit to the system. Currently, MDPI active i-fish sites include: Lombok, Kupang, Bone, Ambon, Buru, Seram, Bitung and Toli-toli.

Previously, to use data from I-Fish, researchers need to download the raw data, with permission from the DMC, and then analyze these data into the data tables, graphics, etc. Currently, MDPI is working on I-Fish development to install an automatic analysis system and a connected reporting system. Through this development, it is hope that individual regular reports per stakeholder and per site can be developed automatically and sent directly to the stakeholder at specified time periods. WE hope that this can incentivize stakeholders to utilize data and inform them on the status and development of the fishery in his/her region. In the future, we will continuously work on the development of I-Fish, increasing the reliability of the data, increasing the analyzes available and the functions of the system, such as potentially using electronic data entry, a vessel registry based on a Unique Vessel identifier (UVI) system, and many more .

Stakeholder yang terhormat,
Site : Lombok
Di bawah ini adalah laporan data I-Fish.
Total Produksi per Alat Tangkap
Gambar 1. berikut ini adalah grafik total produksi per alat tangkap hasil pengumpulan bulanan data sampling di Lombok pada tahun 2015.



Gambar 1. Total produksi per alat tangkap di site Lombok
Singkatan
HL : Ham Line
PL : Pole and Line
PS : Purse Seine
UN : Unidentify

Extracted data from I-Fish development.

Indonesia Tuna Fishery Will Move Forward to MSC Full Assessment in 2015

As a commitment to achieve sustainable fisheries, the Ministry of Maritime Affairs and Fisheries (MMAF) plans to go forward to full assessment of MSC certification (Marine Stewardship Council) for the handline and pole and line tuna fisheries by the end of 2015.

This is a good step from the government to protect the tuna fishery resources as well as ensuring continued market access for Indonesian industries worldwide, as the request for sustainably sourced fish increases, especially in the European and US markets.

To achieve this ambitious step MMAF has invited tuna fishery stakeholders to support the process. Collaborative work between the government, civil society, academia, fishery industry associations and experts is established in the form of a FIP steering committee. This committee is led by the MMAF to coordinate the tuna fishery improvement work carried out by each party to contribute to the MSC full assessment.

MDPI as one of the civil society members of fisheries in Indonesian has expressed its commitment to the MMAF to support the certification of tuna fisheries in Indonesia. Partnership with the MMAF and the main industry association focusing on the relevant gears, AP2HI, will be important as the time for full certification comes closer.

Is There Potential for Domestic FIP? Mud Crab Project Site in Kaimana, West Papua

As MDPI's and Conservation International's (CI) joint project, which focuses on mud crab in Papua, comes into its second quarter things are getting exciting! The first quarter entailed the establishment of the site, developing and testing a port sampling system, meeting people and developing partnerships with stakeholders. As we move into quarter 2 we plan to step things up. August will see us officially establishing a FIP in the region, developing a portfolio of potential buyers for the product, hopefully within the domestic market and establishing a DMC for co-management of the fishery. Usually fish from a FIP or a FT project will go to the export market and we aim to identify if perhaps the domestic market can appreciate a high quality product coming from a small community project where sustainability and development of the fishing community is a priority. To learn more about our project in Kaimana, please visit the following link: <http://www.mdpi.or.id/index.php/component/k2/item/68-new-mdpi-ci-collaboration-in-kaimana-west-papua-for-mud-crab-management>



Mud crab fisher in Kaimana. Photo credit: Karel Yerusa/MDPI

Four Fishers Associations (FA) in Kaimana are Committed to support the Fishery Improvement Program for Mud Crab

There are four FAs formed in Kaimana and they are committed to supporting the FIP program conducted by MDPI. A recent training on

sustainable mud crab fishery was conducted and here are the results. Fishers have agreed:

1. to obeying the Decree No. 1 in 2015 related to the catch practice of lobster and mud crab.
2. to not selling female crabs because one female crab would produce more than 1,000,000 eggs, which will be a candidate for many crabs in the future.
4. They will not catch crabs that are laying eggs and prior to molting process.
5. to have their crabs recorded in a port sampling project
6. to measure the carapace and will catch male crab with standard size is 11 cm, which at this size it will reach 300 grams and meets the standards mandated by the Decree No. 1 in 2015.

NWO Project Kick Off: Technology and Innovations towards Sustainability in Indonesia's Tuna Supply Chains

The challenges of providing adequate information for fisheries management, businesses, and fishers is rising significantly. Indonesia as one of the largest tuna producers and suppliers of raw and processed products to EU and US market has to provide information technological advances required by international market to remain competitive.

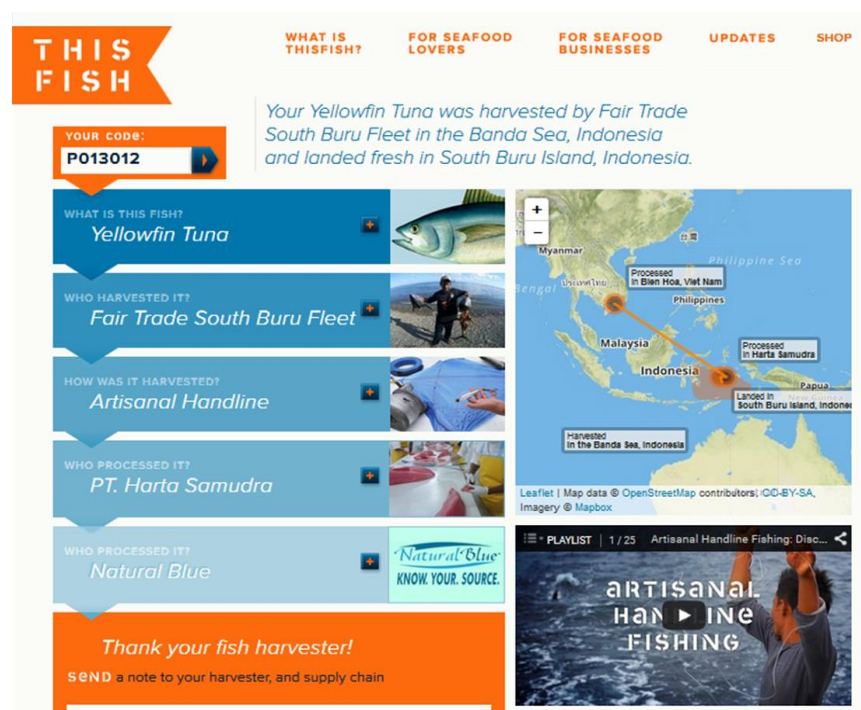
The good thing is that there are good signs that value chain actors are willing to invest in low cost information infrastructures that they can utilize to organize their own informational flows and contribute to traceable product as required by traders and demanded by buyers.

Given this background, MDPI, Improving Fisheries Information and Traceability for Tuna (IFITT) and BESTTuna will pilot and research traceability-based technologies (TBTs) that facilitate improved information flows and help both tuna fishermen and processors in Indonesia to meet informational requirements.

This 18 months NWO-funded project operationalizes strategic partnerships between universities, NGOs and businesses to implement TBTs and to understand if and how those TBTs can improve ecological, economic and social conditions related to tuna fisheries in Indonesia.

Do you want to know the story of your fish? Click the following link:

<http://thisfish.info/about/what/>



Thisfish system

Yayasan Masyarakat dan Perikanan Indonesia (MDPI)

Email: info@mdpi.or.id

Website: www.mdpi.or.id

Facebook: [Masyarakat Dan Perikanan Indonesia](https://www.facebook.com/MasyarakatDanPerikananIndonesia)

Twitter: [@MDPIndonesia](https://twitter.com/MDPIndonesia)